



# PHOTOSHOP CLEAR CUT GUIDE

You need to remove the background of your image but you don't know what process is best for the job... Here is a guide to help you work out which process is best for your image.



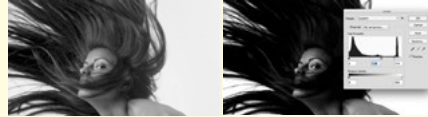
## CHANNEL MASKS - FOR HAIR & SKY

- Go to the channels panel (Window > Channels).
- Find the channel that has the most contrast between the background & foreground. Do this by clicking on the words Red, Green & Blue.
- Right click the channel and duplicate it.
- Name the channel 'MyTemporary Mask'.
- Turn off the eyes on all the channel layers except 'MyTemporary Mask'.



- Go to Image > Adjustments > Levels.
- Move the darks, midtones and light arrows

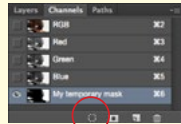
until you get a good contrast of black & white. You will have to experiment. Click ok.



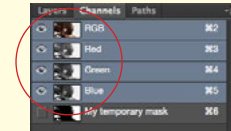
- Use the Brush tool to paint black into the remaining white/grey areas.



- Choose the Load Channel as Selection button at the bottom of the Channels Panel.



- Selection > Inverse.
- Click on the RGB words at the top of the Channel list.



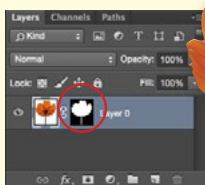
- Go to the layers panel (Window > Layers).
- Click the Layer Mask button at the bottom of the layers panel.



## REMOVING A WHITE BACKGROUND



- Select the Magic Wand tool .
- Click on the white background.
- From the top menu choose Select > Inverse.
- Click the Layer Mask button at the bottom of the layers panel.



WATCH THE VIDEO TUTORIALS

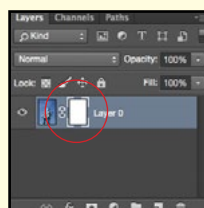


[BYOL.IE/PHOTOSHOPTUTORIALS](http://BYOL.IE/PHOTOSHOPTUTORIALS)

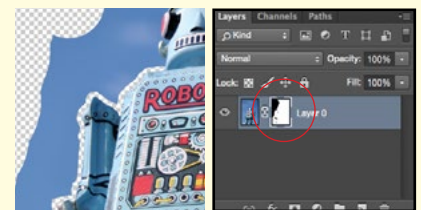
## LAYER MASKS - WHEN ALL ELSE FAILS



- Click the Layer Mask button from the bottom of the layers panel.
- Choose the Brush tool .
- Select your mask by clicking on the mask thumbnail in the Layers panel.



- Paint around the image using the colour Black to remove the background.



TIP: Use various brush sizes and hardness.

## REFINING YOUR MASK

- Double click on the mask in the Layers Panel.
- Mask properties panel will open. Click Mask Edge.
- Change the view mode to black to see the edges more clearly.
- Play with the options in the Refine Mask Panel - start by moving the 'shift edge' to a negative number.

